

Major Projects & Purchases

Computers & Software	\$7,140
Handicap Parking & Lights	\$6,492
Improvements—Parish Facilities	\$18,392
Church Furnishings & Fixtures	\$10,378
Piano (partially offset by donations)	\$35,620
Office Equipment	\$7,616

Our Mission Statement

We the people of San Antonio Parish strive to be a community of faith, hope, and love. We find our identity and mission in Jesus Christ and His Gospel. We celebrate our life as Catholic Christians in word, worship, and service. By recognizing our baptism, we accept our call to personal renewal and reach out with the gospel message to families and individuals, extending an invitation to fellowship with us.

Miscellaneous Donations Yellow Envelopes

Type of Donation	Total Families	Amount Contributed
Religious Education	113	\$3,523
St. Francis Tuition Assistance	113	\$9,046
Youth Ministry	135	\$6,754
Liturgy/Music	81	\$2,688
Maintenance/Development	44	\$2,150
Hispanic Ministry	5	\$234
Men's Group	11	\$390
Miscellaneous	3	\$128
Peace & Justice	4	\$151
Respect Life	102	\$6,315

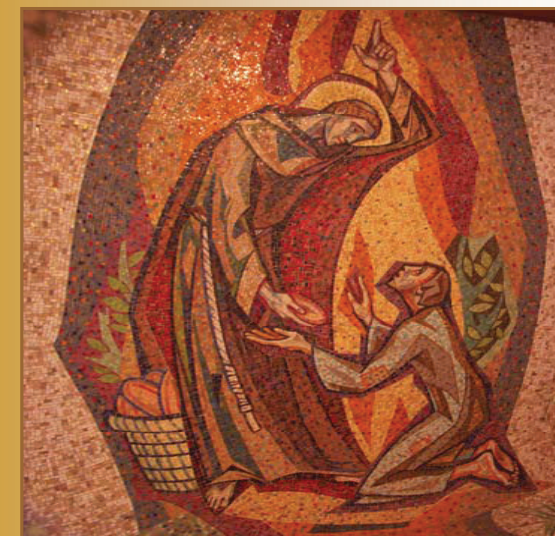


Parish Statistics	Total
Registered Families	4,062
Registered Families who make Recorded Donations	46%
Families receiving envelopes	2,018
Families who give electronically	67
Families who made contributions	1,875

Sacraments:	Total	Faith Formation:	Total
Baptism - Infants up to age 7	134	Pre-School/Kindergarten	107
Baptisms - Ages 7 to 17	11	Elementary	463
Baptisms - Adults	6	Home Study (Elementary)	19
Received into Full Communion	4	Junior High	124
First Communion	124	Rite of Initiation - Elementary	53
Confirmation	131	RCIA - Adults	14
Marriage	21	Adult Education	300
Funerals	45		1,080

Youth Ministry	Total
Confirmation I	134
Confirmation II	135
SALT	124
	393

San Antonio de Padua del Cañon Catholic Church



Stewardship Report July 1, 2009 ~ June 30, 2010

“How do we know what God expects of us if we are not in close communication with Him through prayer?”

Archbishop Robert J. Carlson,
January 19, 2010

*San Antonio de Padua del Cañon
Catholic Church*

Dear Friends in Christ,

With many thanks to God for the people of San Antonio Parish and their continued generosity the Finance Council and I present to you the Stewardship Annual Report for the fiscal year 2009/2010.

It is your time, talent, and treasure that make San Antonio the great parish it is. The many projects and services that take place within our parish are due to the out pouring generosity of you, our parishioners.

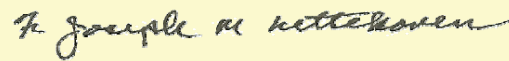
Revenue for the parish for the fiscal period of July 1, 2009 through June 30, 2010 was \$2,023,545, which is down from last fiscal year by \$1,054. Diocesan second collections were increased to \$103,189 bringing total revenue to \$2,126,734. Total expense was \$2,235,780 which was an increase from last fiscal year by \$101,042 or 4.7%. The 2009/2010 fiscal year ended with a surplus of \$231,140 before depreciation expense of \$340,186, ending the year with a deficit of \$109,046. Also included in this report are the Parish Statistics, which gives you a fuller picture of our parish community and the stewardship of those who volunteer their time and talent..

Once again we would like to assure you that your weekly contributions to San Antonio Church make a difference and are used for operating expenses for the parish, parish ministries and building projects within San Antonio Parish. The ongoing financial support of our parishioners is essential for the parish to remain in a debt free financial position in this current fiscal year, enabling us to continue to support the many pastoral services of the parish.

It is sincere gratitude we have for all that you have done and continue to do for San Antonio Parish. We ask the blessings of our good and gracious God as we embrace the challenge of moving forward together in faith.

May God's abundant blessings be upon you and your family and by His grace, may we all become better stewards of our time, talent, and treasure.

Sincerely In Christ,

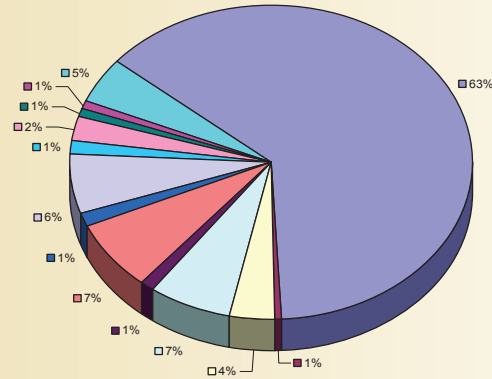


Reverend Joseph Nettekoven, Pastor



Mr. Dan Thomas, Finance Council Chairman

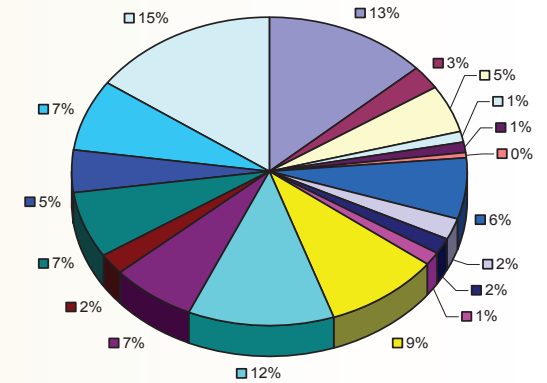
REVENUE



Fiscal Year 2009/2010

			Fiscal Year 2008/2009
63%	Collections - Sundays, Holydays, Christmas & Easter	\$1,338,878	\$1,391,321
1%	Sacraments - Baptisms, Funerals, Marriages	\$13,936	\$14,478
4%	Religious Education	\$74,614	\$66,060
7%	Youth Ministry	\$145,279	\$124,706
1%	Liturgy & Music	\$22,624	\$1,115
7%	Family Assistance & People In Need	\$155,348	\$137,113
1%	Evangelization, Men's Group, Moms Group, Respect Life, Peace & Justice, etc.	\$26,406	\$14,039
6%	Fiesta	\$131,971	\$150,000
1%	Other - Novenas, Advertising, Mass Intentions, social activities, etc.	\$28,145	\$21,962
2%	Interest & Dividend Income	\$51,008	\$64,124
1%	PSA Rebate	\$22,160	\$26,745
1%	Restricted	\$13,176	\$12,936
Parish Revenue		2,023,545	2,024,599
5%	Diocesan Special Collections	\$103,189	\$75,186
Total Revenue		\$2,126,734	\$2,099,785

EXPENSES



Fiscal Year 2009/2010

Fiscal Year
2008/2009

			Fiscal Year 2008/2009
13%	Administrative Salaries (Priests & Parish Office Staff)	\$299,437	\$259,998
3%	Household & Custodian Salaries	\$56,583	\$53,031
5%	Employee Taxes & Benefits	\$109,695	\$91,185
1%	Church Supplies & Expense	\$26,750	\$22,709
1%	Parish Office Supplies & Expenses, Office Equip & Repair, Professional & Technical Services	\$26,024	\$49,959
0%	Rectory Living Supplies & Expenses	\$9,604	\$18,242
6%	Repairs & Maintenance	\$143,094	\$163,786
2%	Utilities	\$46,992	\$46,784
2%	Property & Liability Insurance	\$41,131	\$37,613
1%	Other Continuing education, gifts & donations, social activities, licenses, etc.	\$31,844	\$57,644
9%	Religious Education	\$207,937	\$208,470
12%	Youth Ministry	\$269,239	\$266,859
7%	Liturgy & Music	\$155,493	\$152,861
2%	Adult/Pastoral Ministry (Evangelization / Stewardship, RCIA, Young Adults, Men's Group, Respect Life)	\$49,682	\$46,688
7%	Family Assistance & People in Need	\$152,838	\$137,213
7%	Diocesan Assessment	\$166,062	\$166,770
15%	Depreciation	\$340,186	\$275,229
Parish Expenses		2,132,591	2,055,041
5%	Diocesan Special Collections	\$103,189	\$79,697
Total Expenses		\$2,235,780	\$2,134,738